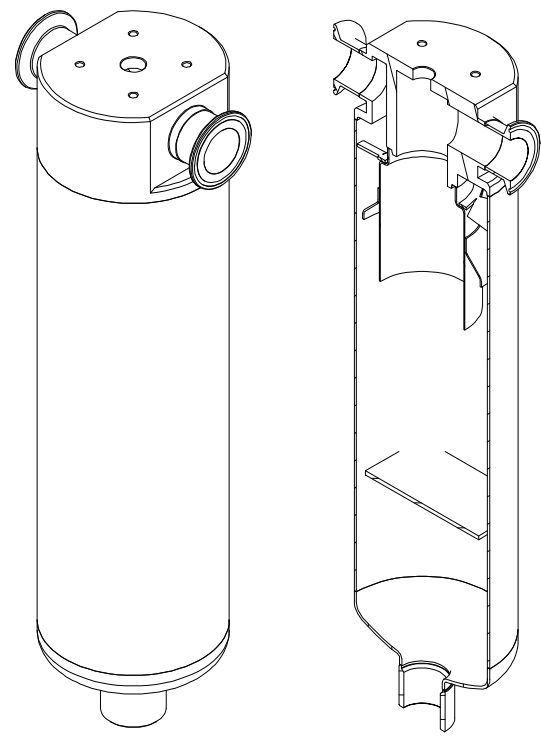
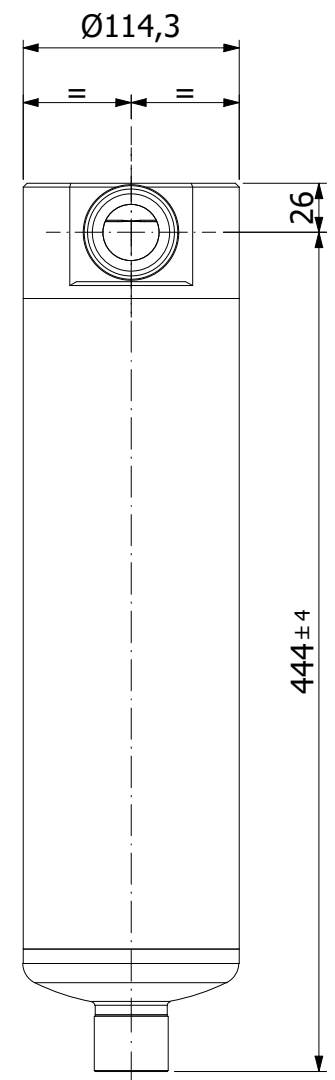
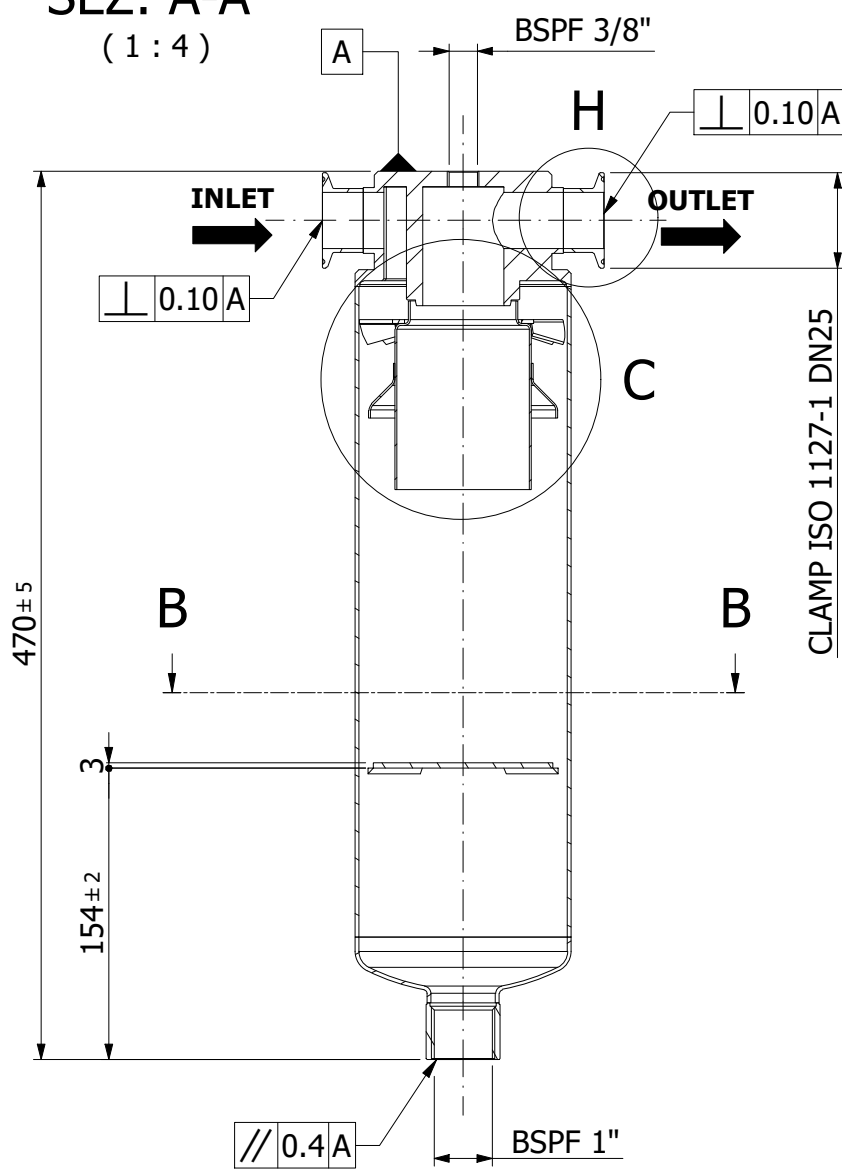
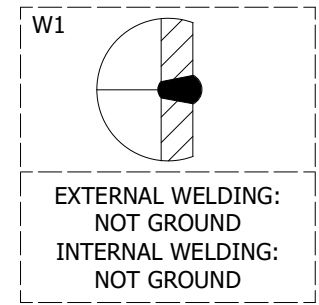


SEZ: A-A
(1:4)



General tolerances:
UNI EN-ISO 22768-vL



EXAMPLE OF DATA LABEL

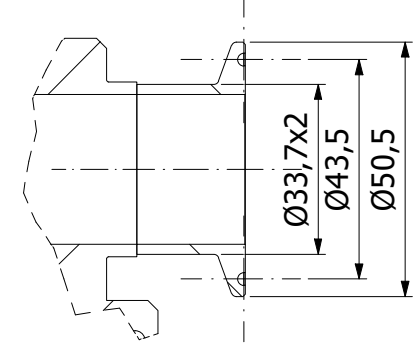
AVT® FILTER HOUSING

PART NUMBER
MODEL
TYPE
CATEGORY 2014/68/EU
VOLUME LITRES (V)
PS/TS
PS/TS
AMBIENT TEMPERATURE
TEST PRESSURE (PT) bar
PED FLUID GROUP (Art.13 - 2014/68/EU)
VESSEL MATERIAL
YEAR OF MANUFACTURE
VESSEL NUMBER

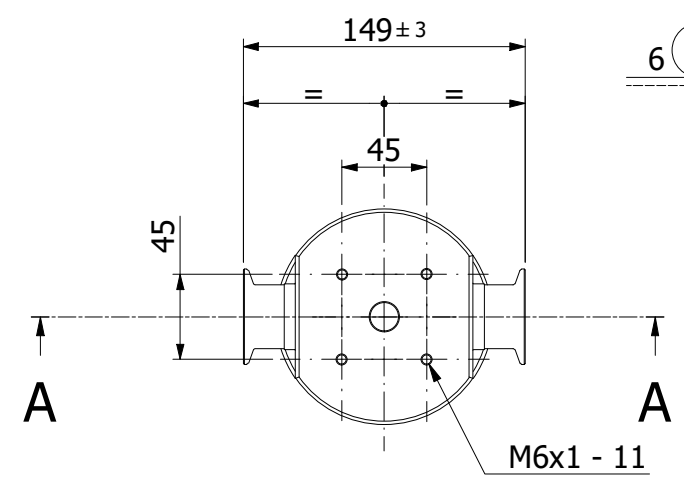
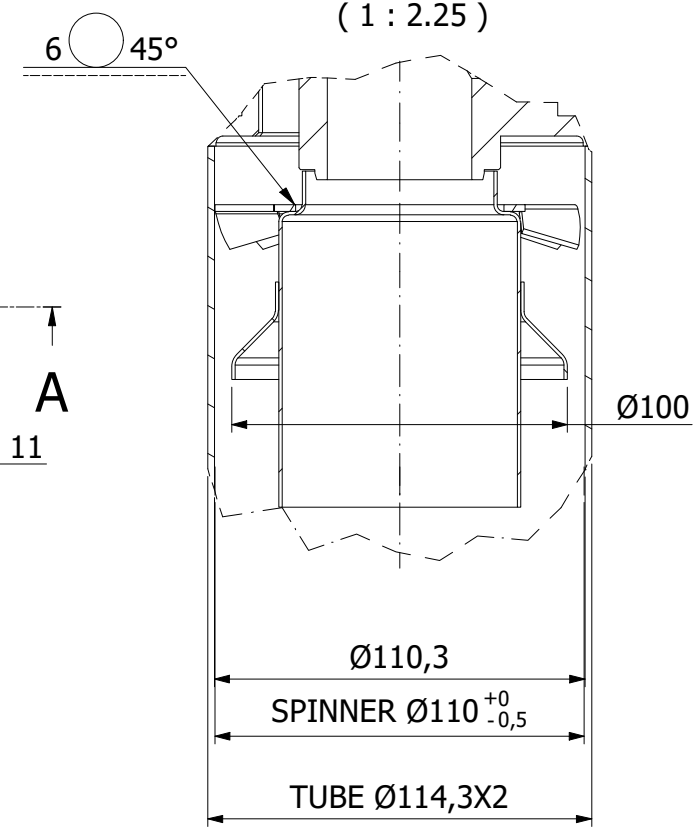
CE 0948

TECHNICAL DATA	
SERIES	STH
PED FLUID GROUP	GR.1 - GAS
PED CATEGORY	II
VOLUMES LITRES (V)	4,9
DESIGN CODE	EN 13445
WORKING CONDITION 1	PS +0/+16 bar TS +1.5/+100 °C
WORKING CONDITION 2	PS +0/+20 bar TS +1.5/+55 °C
AMBIENT TEMPERATURE	-20/+65 °C
TEST PRESSURE (PT)	29 bar
VESSEL MATERIAL	1.4404 (AISI316L)
EXTERNAL SURFACE	MIRROR POLISHED

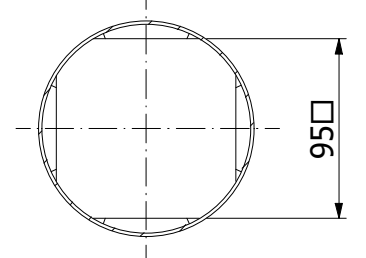
DET: H
(1:1.5)



DET: C
(1:2.25)



SEZ: B-B
(1:4)



Connection clamps must be chosen adequately to the risk analysis of the plant manufacturer

REV	REVISION DESCRIPTION	DATE	REVISED BY
08	CHANGED MODEL DESCRIPTION	30/03/2022	FOS
07	REVISED DATA LABEL, ADDED AMBIENT TEMPERATURE IN THE TECHNICAL DATA AND CHANGED WORKING CONDITION "TS"	03/03/2022	FOS
06	ADDED INLET AND OUTLET ARROWS, ADDED GENERAL TOLERANCE AND ADDED DIMENSIONS ON HEAD HOLES	08/02/2022	FOS
05	MODIFIED WELDING ZONE BETWEEN IMPINGER AND HEAD	30/04/2021	FOS
04	CHANGE IN/OUT CONNECTION TO CLAMP ISO1127-1, ADDED THREADED HOLE FOR SUPPORT	06/04/2021	FOS
03	GENERAL REVISION AFTER PROTOTYPES REALIZATION, ADDED VOLUME AND TOLERANCE	16/02/2021	FOS
02	PED CATEGORY ADDED AND ATEX REMOVED	19/01/2021	FOS
01	GENERAL REVISION	19/01/2021	BOS

	MODEL STH003A-C	DRAWING NUMBER 590969		REVISION 08
	N° OF SHEET 1 of 1	RELEASING DATE 08/10/2020	SIGNATURE FOS	